



PAVILION
AT THE GROVES



PAVILION AT THE GROVES

15951 Woodland Hills Dr. Humble, TX 77346

Pavilion at The Groves, a luxury, garden-style apartment community, is located 1.5 miles north of Beltway 8 between Woodland Hills Drive and West Lake Houston Parkway.

Package Include

- ✓ Property Images
- ✓ Floor Plan
- ✓ Community Amenities
- ✓ Apartment Amenities
- ✓ Pet Policy
- ✓ Location
- ✓ Office Hours

Contact Us

281.458.3580

www.pavilionatthegroves.com

GALLERY



1 of 36



2 of 36



3 of 36



4 of 36



5 of 36



6 of 36



7 of 36



8 of 36



9 of 36



10 of 36



11 of 36



12 of 36



13 of 36



14 of 36



15 of 36



16 of 36



17 of 36



18 of 36



19 of 36



20 of 36



21 of 36



22 of 36



23 of 36



24 of 36



25 of 36



26 of 36



27 of 36



28 of 36



29 of 36



30 of 36



31 of 36



32 of 36



33 of 36



34 of 36



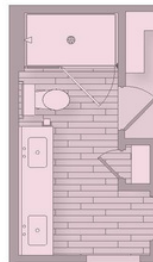
35 of 36



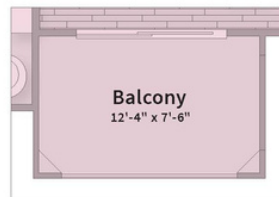
36 of 36

FLOOR PLAN

Unit C



Unit Cs
Alternate Shower & Sinks
on Upper Floors



Unit C1
Alternate Balcony

BEDROOM 1 | BATH 1 | SQ FT 812*

*SQ FT listed is an approximate value for each unit. Floorplans are representative and may vary.



COMMUNITY AMENITIES

- Package Service
- Wi-Fi at Pool and Clubhouse
- Day Care
- Concierge
- 24 Hour Availability
- Trash Pickup - Door to Door
- Health Club Discount
- Business Center
- Clubhouse
- Playground
- Basketball Court
- Gated
- Grill
- Controlled Access Gates with EZ Tag System
- On-Site Dog Run/Dog Park
- Pre-wired Intrusion Alarms
- Resident Business Library
- Unlimited Hot Water (TEAL System)
- Valet Door-to-Door Trash Pick Up

PET POLICY

Pets: Max 2 Allowed

Cats: Allowed | One time Fee \$250 | Rent \$30 | Deposit \$250

Dogs: Allowed | One time Fee \$250 | Rent \$30 | Deposit \$250

Restrictions: The following breeds, regardless of weight are prohibited: German Shepherds, Huskies, Malamutes, Chow Chows, Great Danes, St. Bernard's, Mastiff, Dobermans, Rottweiler's & Pit Bulls.

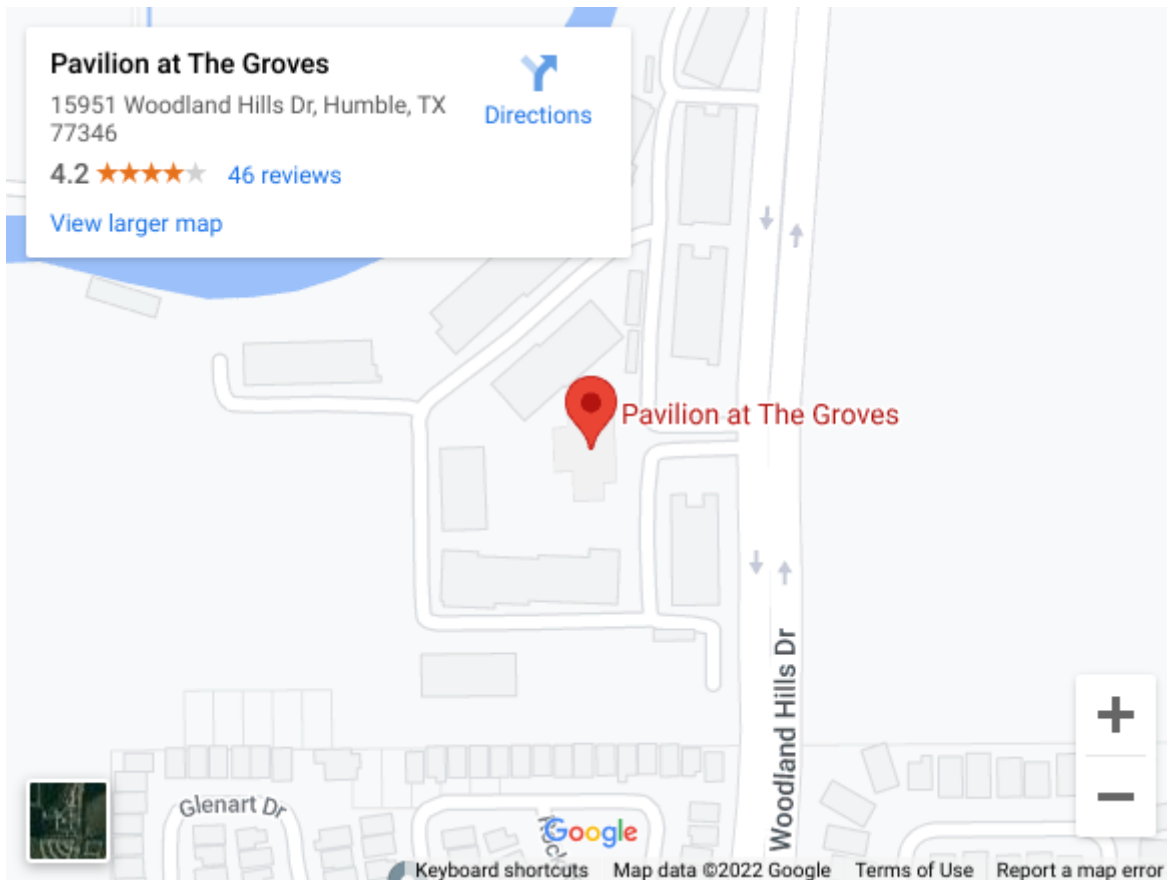
***Available In Select Units**

APARTMENT AMENITIES

- In Unit Washer & Dryer
- Air Conditioning
- Ceiling Fans
- Dishwasher
- Disposal
- Ice maker
- Granite Countertops
- Stainless Steel Appliances
- Pantry
- Microwave
- Oven
- Range
- Refrigerator
- Freezer
- Pool Views*
- Private Yards*
- Walk-In Showers*
- Spacious Private Patios and Balconies
- Attached Garages*
- Dual Paned, Energy Efficient Windows
- Energy Efficient AC/Heat System
- Full-size Washers and Dryers
- Large Walk-in Closets with Custom Wood Shelving
- Luxurious Carpeting in Bedrooms

LOCATION

15951 Woodland Hills Dr. Humble, TX 77346



OFFICE HOURS

Monday - Friday: 9:00 AM - 6:00 PM

Saturday: 10:00 AM - 5:00 PM

Sunday: 1:00 PM - 5:00 PM